



) EYE-LCD-2160 SquareTile

eyevis LCD Series

) DISPLAY CHARACTERISTICS

-) 21.6-inch square LCD screen
-) Ultra super narrow bezel design for seamless tiled applications
-) Direct-LED illumination for best image uniformity
-) High resolution and perfect viewing angles
-) Robust but light-weight aluminium metal housing
-) Daisy Chain for signal (DVI) and control (RS232)
-) Silent ventilation system
-) Different installation possibilities
-) Modular wall mount bracket for easy installation
-) Ideal for creative digital signage applications

) TECHNICAL SPECIFICATIONS

) Features

| | |
|--------------|--------------------------|
| Bezel | 5.9 mm Active to Active |
| Aspect Ratio | 1:1 |
| Backlight | Direct-LED |
| Connectivity | DVI in/out, RS232 in/out |

) General

| | |
|----------------|------------------------|
| Resolution | 960 x 960 pixel |
| Pixel pitch | 0.403(H) x 0.403(V) mm |
| Active area | 387.36 x 387.36 mm |
| No. of Colours | 16.7M colours |

) Optical Characteristics

| | |
|---------------|------------------------------|
| Brightness | 450 cd/m ² (typ.) |
| Contrast | 4000:1 (typ.) |
| Viewing Angle | 178° H/V (typ.) |
| Response Time | 8 ms (typ.) |
| Gamma | 2.2 |
| Color Temp. | 10000 K |
| Color gamut | 72 % |

) Environmental

| | |
|------------------------|---|
| Power Consumption: | typ. 60 Watt, Standby ≤1Watt, (internal power supply) |
| Input Voltage: | 100V – 240V AC, 50/60 Hz |
| Operating Temperature: | typ. 0 - 40 °C |
| Humidity: | typ. 20-80 % RH (no condensation) |

) Mechanical Size

| | |
|---------|-----------------------------------|
| Outline | 393.26(W) x 393.26(H) x 100(D) mm |
| Weight | 7.5 kgs |

) PRODUCT PICTURES



Front View



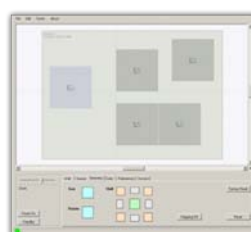
Side View



Back View

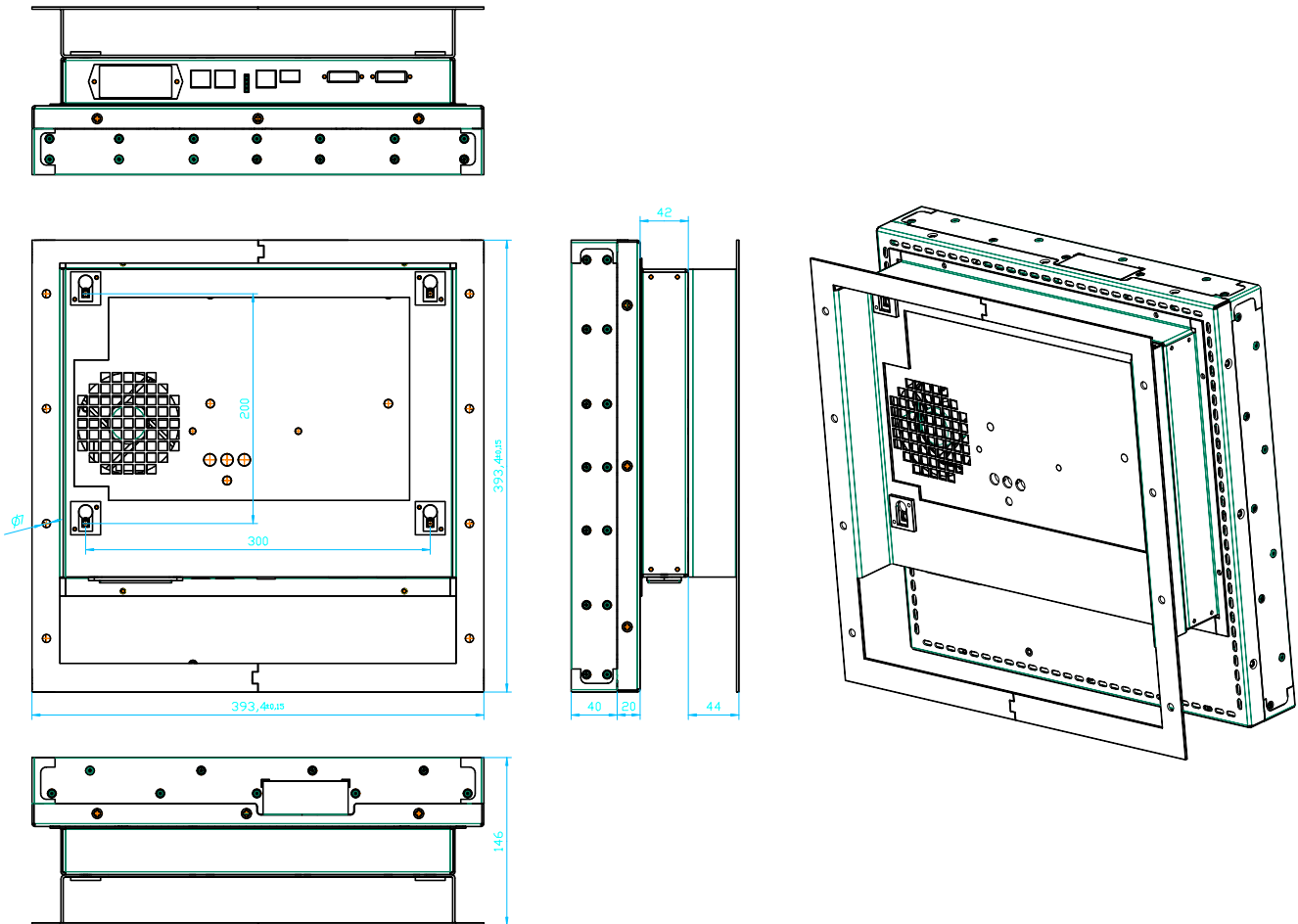
) ANY CONFIGURATION POSSIBLE

-) Internal high quality image processing
-) Integrated scaler & matrix for easy image alignment
-) Image manipulation for any mounting position (Shift / Flip / Rotate / Mirror)
-) Setup and adjustment with an intuitive software GUI
-) Easy source assignment
-) Flexible image manipulation of each single SquareTile



) EYE-LCD-2160 squareTILE

) DRAWING



) APPLICATION POSSIBILITIES



eyevis GmbH

Hundsschleestr. 23 • 72766 Reutlingen • Germany
Phone: + 49 (0) 7121 43303 - 0 • Fax: + 49 (0) 7121 43303 - 22
www.eyevis.de • info@eyevis.de

As at: 08.08.2012/V1.1 • Subject to change!

All trademarks and registered trademarks are the property of their respective owners. Copyright © 2012 eyevis GmbH. All rights reserved.